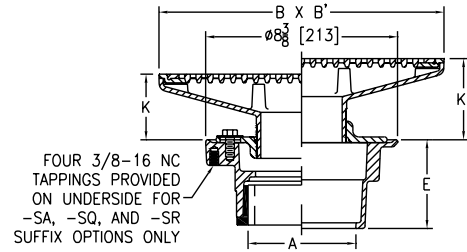


Z415 BODY ASSEMBLY WITH "TYPE J" HEEL-PROOF STRAINER



ENGINEERING SPECIFICATION

Zurn ZN415J floor and shower drain features Dura-Coated cast iron body with bottom outlet, combination invertible membrane clamp and adjustable collar with seepage slots, and "TYPE J" polished, nickel bronze rectangular light-duty, heel-proof strainer.



Strainer Designation	Dimensions in inches [mm]						Str. Open Area sq in [cm ²]	Approximate Weight lb [kg]
	A Pipe Size	B Diameter	K		K'			
			Min.	Max.	Min.	Max.		
-8J	2 [51], 3 [76], 4 [102]	4-1/2 [114] x 8 [203]	1-3/8 [35]	2-5/8 [67]	2-1/8 [54]	3-3/8 [86]	12 [77]	13 [6]
-9J		5 [127] x 9 [229]	1-5/8 [41]	2-13/16 [71]	2-3/8 [60]	3-5/8 [92]	15 [97]	14 [6]
-13J	3 [76], 4 [102]	5-1/2 [140] x 13 [330]	2-3/32 [53]	3-5/16 [84]	2-13/16 [71]	4 [102]	20 [129]	18 [8]
-17J		5 [127] x 17 [432]	2-1/4 [57]				29 [187]	23 [10]
-21J		5 [127] x 21 [533]	2-5/16 [59]				32 [206]	27 [12]
-20J		10 [254] x 20 [508]	2-9/16 [65]				3-1/4 [83]	2-7/8 [73]

PREFIXES	DESCRIPTION	STRAINER DESIG.	PIPE SIZE	LIST PRICE
ZN415*	D.C.C.I. Body Assembly with Polished Nickel Bronze Top	-8J	2", 3", 4"	1,054.00
		-9J	2", 3", 4"	1,054.00
		-13J	3", 4"	1,430.00
		-17J	3", 4"	1,524.00
		-21J	3", 4"	2,196.00
		-20J	6"	4,780.00
ZB415	D.C.C.I. Body Assembly with Polished Bronze Top	-8J	2", 3", 4"	984.00
		-9J	2", 3", 4"	984.00
		-13J	3", 4"	1,298.00
		-17J	3", 4"	1,392.00
		-21J	3", 4"	1,934.00
		-20J	6"	3,998.00
Z415	D.C.C.I. Body Assembly ONLY (add "-L/Top" to product sku)	No Strainer	2", 3", 4"	194.00
			6"	739.00

OUTLETS (SPECIFY PIPE SIZE IN INCHES AND TYPE OF OUTLET)				
OUTLET TYPE		PIPE SIZE/ OUTLET TYPE	E BODY HT. DIM.	ADD
IC	Inside Caulk	2IC, 3IC, 4IC	4-13/16"	N/C
IP	Threaded	2IP	2-7/16"	80.00
		3IP	2-3/4"	80.00
		4IP	2-13/16"	80.00
		6IP	2-7/8"	80.00
NH	No-Hub	2NH, 3NH, 4NH	3-13/16"	N/C
NL	Neo-Loc	2NL, 3NL, 4NL	3-7/8"	N/C

SUFFIXES		ADD
-AR	Acid Resisting Epoxy Coated Cast Iron	653.00
-G	Galvanized Cast Iron	198.00
-P	Trap Primer Connection (1/2")	N/C
⌚ -SA	Stabilizer Assembly (See Z1035)	138.00
⌚ -SQ	Stabilizer Q-deck (See Z1035-Q)	184.00
⌚ -SR	Stabilizer Ring (See Z400-SR)	121.00
⌚ -TC	Neo-Loc Test Cap Gasket (2", 3", 4" NL Bottom Outlet Only)	24.00
-U	1"-3" High Extension Adapter (See Z400-U)	D.C. 140.00
		Galv. 306.00
	For each additional 1" above 3"	98.00
-V	Backwater Valve (Not Available with -Y)	380.00
-VP	Vandal-Proof Secured Top	58.00
-Y	Sediment Bucket (Not Available with -V)	109.00
-90	90° Threaded Side Outlet Body Assembly (2" and 3" Only)	219.00

BEST SELLERS	LIST PRICE
ZN415-2NH-8J	1,054.00
ZN415-3NL-9J-P	1,054.00

Supplied By:



877-903-7246

www.commercialplumbingsupply.com

*Regularly furnished unless otherwise specified.

Items designated as Best Sellers are most specified and are generally in stock for shipment.

⌚ This symbol denotes a product that is engineered to reduce installation and rework time.

For additional product information, please visit www.zurn.com